



# Meet & Greet P5

21 January 2025



# Agenda:

1. Welcome
2. Address by Principal
3. Sharing by Year Head



# Our School Leaders. . .



**Mdm Teresa Kelly Len**  
**Principal**



**Mrs Tan-Kay Hwee Geak**  
**Vice Principal**  
**(Academic)**



**Mr Mark Chan**  
**Vice Principal**  
**(Academic)**



**Mr Michael Chan**  
**Vice Principal**  
**(Administration)**

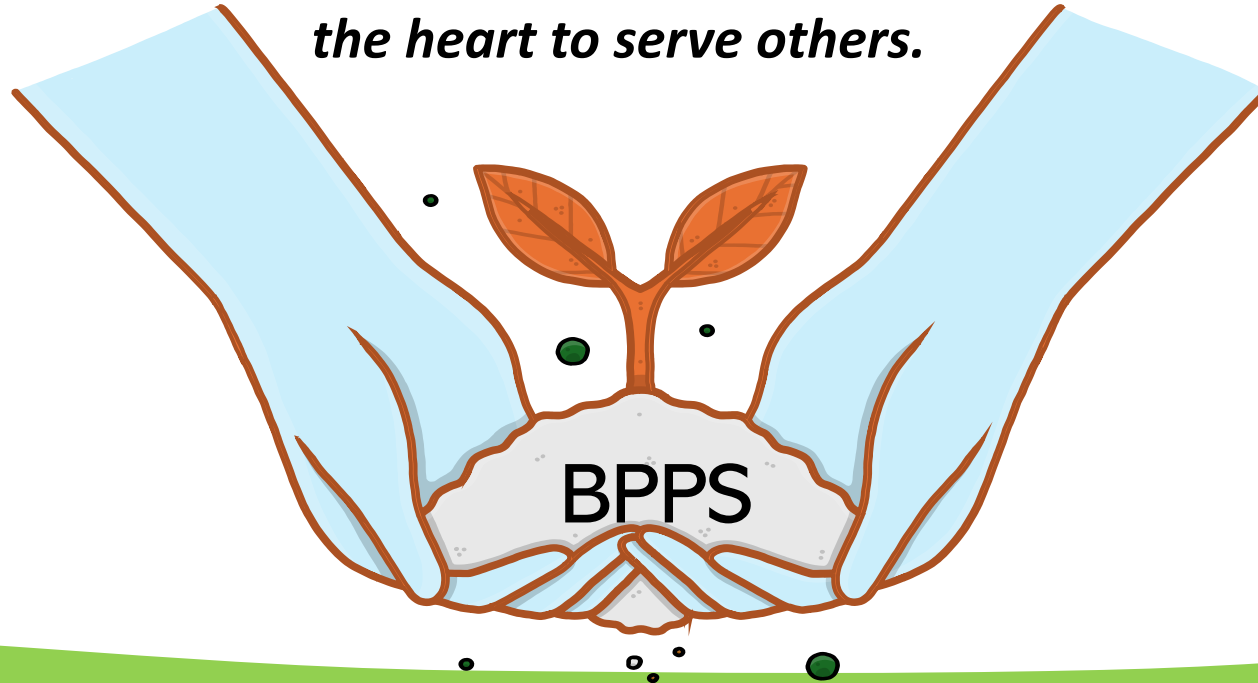


# Our Key Personnel. . .



## Vision: Future Leaders, Concerned Citizens

Every learner an adaptable and **empathetic** leader who is grounded in school values and *has the heart to serve others.*



**MISSION: DEVELOPING OUR STUDENTS HOLISTICALLY IN A VIBRANT AND CARING ENVIRONMENT**

To provide students with rich and positive learning experiences to nurture and develop **respectful** and **responsible** students who show **compassion** and **gratitude** towards others, while upholding **integrity** and staying **resilient**.

**Respect, Responsibility, Compassion, Integrity, Resilience, Gratitude**

# School Vision

## Future Leaders Concerned Citizens

### Vision unpacked:

- Every learner an adaptable and empathetic leader who is grounded in school values and has the heart to serve others.



# School Mission

**Developing our students holistically in a vibrant and caring environment.**

## Mission unpacked narrative

- To provide students with rich and positive learning experiences to nurture and develop respectful and responsible students who show compassion and gratitude towards others, while upholding integrity and staying resilient.



# School Values

Respect, Responsibility, Resilience, Integrity, Compassion, Gratitude

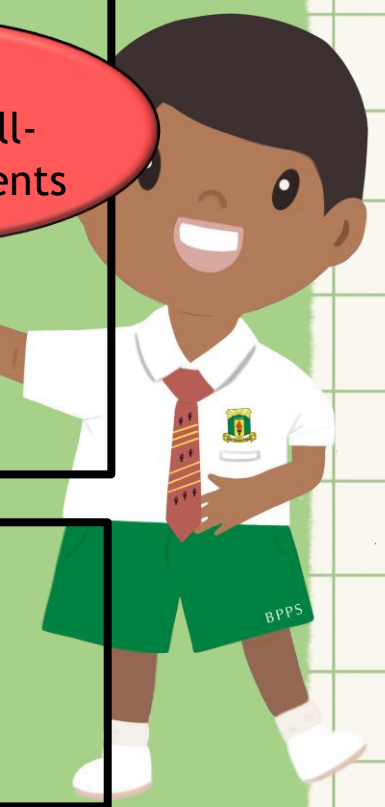
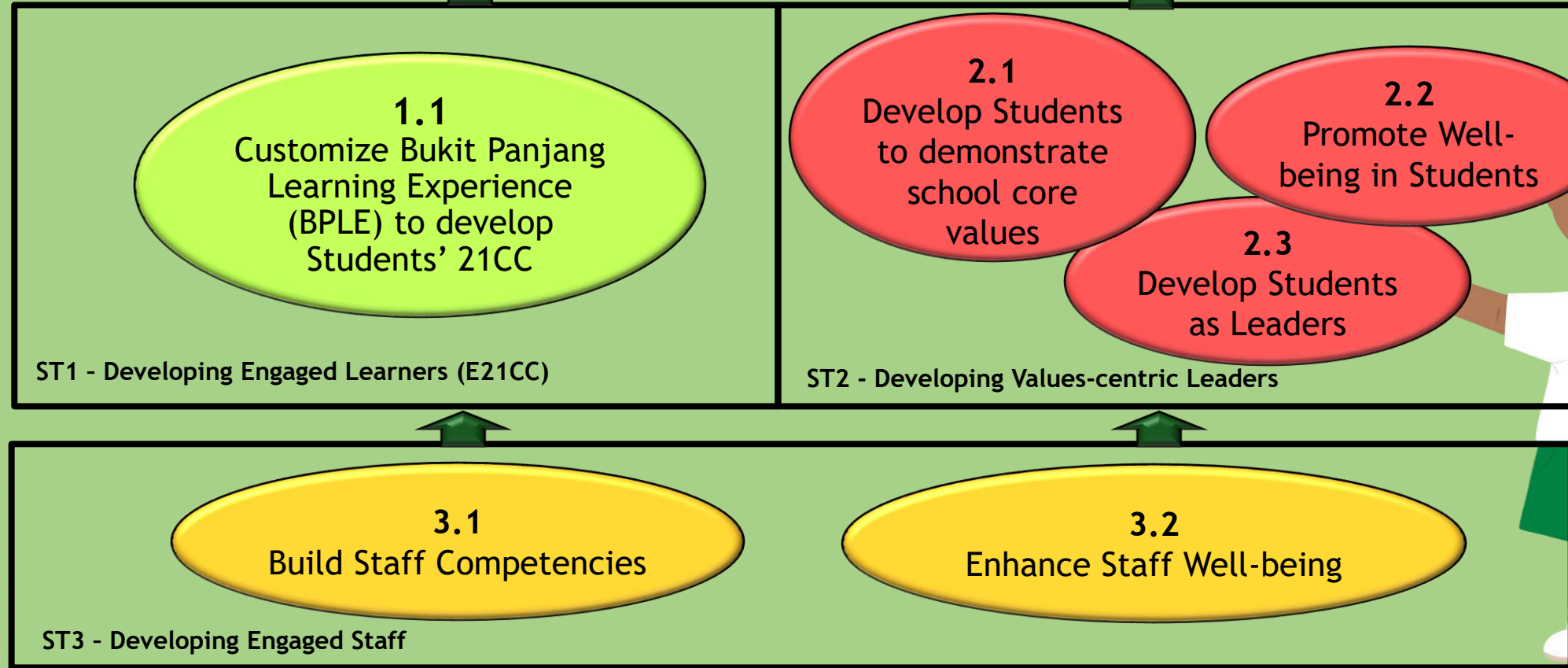
Levels	Primary 1	Primary 2	Primary 3	Primary 4	Primary 5	Primary 6
Values	<b>RESPECT</b>	<b>RESPONSIBILITY</b>	<b>COMPASSION</b>	<b>INTEGRITY</b>	<b>RESILIENCE</b>	<b>GRATITUDE</b>
Our Definition	<i>Care towards someone or something</i>	<i>Ability to make good decisions on your own</i>	<i>Feeling of sympathy and sadness for the suffering of others and a wish to help them</i>	<i>Quality of being honest and having strong moral principles</i>	<i>Ability to be happy and successful again after something difficult or bad.</i>	<i>Strong feeling of appreciation to someone or something for what the person has done to help you</i>
Tagline	<b>Give respect to Get respect!</b>	<b>Take ownership of your actions!</b>	<b>See it with your heart!</b>	<b>Do good, even when no one is watching!</b>	<b>Each failure is a step towards success!</b>	<b>Show gratitude. Let thank you be your attitude!</b>





# BPPS Strategy Map

**VISION:** Future Leaders, Concerned Citizens  
**MISSION:** Developing our students holistically in a vibrant and caring environment



- Respect
- Responsibility
- Resilience
- Integrity
- Compassion
- Gratitude



# SUBJECT-BASED BANDING (P5 to P6)

End of P5		
Takes 1 or more foundation subject(s) and does very well in the subject(s) ↓ School may allow him to upgrade 1 or 2 subjects to standard level if the school believes he can cope or continue the same subject combination in P6	Takes standard subjects and has difficulties coping ↓ School may allow him to take 1 or more subjects at foundation level in P6	All other children ↓ School will allow them to continue the same subject combination in P6
At P6		
Your child takes the subject combination decided by the school		
End of P6		
Your child sits for the Primary School Leaving Examination (PSLE)		



# CRITERIA FOR HMT (P5 TO P6)

- The student would continue with HMT in P6 if he/she
  - passes all 4 subjects; and
  - achieves a Pass for HMT at P5

***Subject combination will be determined by the school.***



# HMT EXAMINATION AND SCORES

- HMT students will sit for both MT and HMT papers during examinations
- Scores for HMT will be reflected on the result slip.
- However, scores for HMT will **not** be included in the calculation of the total score for the examination.



# HMT (Chinese) at PSLE







Higher Chinese Grade	Marks
Distinction	(80 -100)
Merit	(65 -79)
Pass	(50 - 64)



# HCL posting advantage To SAP schools

Students who obtained a Distinction/Merit/Pass for HCL at the PSLE and an overall PSLE Score of 14 or better will receive a posting advantage when applying to SAP schools.

Students will be considered for admission to SAP schools in the following order:

1st		7	NO HCL	Students with better PSLE Scores will be posted first, even if they did not take HCL
2nd		8	DISTINCTION	
3rd		8	MERIT	Amongst students with the same PSLE Score, those with better HCL grades will be posted first
4th		8	PASS	
5th		8	NO HCL	
6th		9	DISTINCTION	

- Students' HCL results are denoted as 'D' (Distinction), 'M' (Merit) or 'P' (Pass).
- Students who obtain (i) a Distinction / Merit / Pass in HCL and (ii) a PSLE Score of 14 or better are eligible for posting advantage to SAP schools.
- Students are ranked taking into account their performance in HCL.
- This posting advantage applies before the tie-breakers for S1 Posting.



# SPECIAL ASSISTANCE PLAN (SAP) SCHOOLS

1. Anglican High School 圣公会中学
2. Catholic High School 公教中学
3. CHIJ Saint Nicholas Girls' School 圣尼各拉女校
4. Chung Cheng High School (Main) 中正中学(总校)
5. Dunman High School 德明政府中学
6. Hwa Chong Institution 华侨中学
7. Maris Stella High School 海星中学
8. Nan Chiau High School 南侨中学
9. Nan Hua High School 南华中学
10. Nanyang Girls' High School 南洋女子中学校
11. River Valley High School 立化中学



# ELIGIBILITY CRITERIA FOR HIGHER MOTHER TONGUE LANGUAGE (HMTL) IN SECONDARY SCHOOLS

- The eligibility criteria for taking HMTL ensures that students can cope with the higher academic load.

## ELIGIBILITY CRITERIA FOR HMTL

- (i) An overall PSLE Score of 8 or better**
- or**
- (ii) An overall PSLE Score of 9 to 14 (inclusive); and attain**
  - **AL 1 / AL 2 in MTL or**
  - **Distinction / Merit in HMTL**

- For students who do not meet the above criteria, secondary schools will have the flexibility to offer HMTL to students if they are assessed to have high ability and interest in MTL, and are able to cope with the learning load required.





# WHAT ARE ACHIEVEMENT LEVELS (AL)?

## WHY ARE THE BANDS UNEVEN?

- Students with similar scores in each subject are grouped into scoring bands measured in 8 ALs.
- AL bands and mark ranges are set based on the learning objectives of the curriculum, and mirror the way we learn.

AL	RAW MARK RANGE
1	≥ 90
2	85 – 89
3	80 – 84
4	75 – 79
5	65 – 74
6	45 – 64
7	20 – 44
8	< 20

When we learn something new, after some initial practice, we often find ourselves improving significantly.


As we get better, the improvements become small steps, and finally, as we reach a high level, we inch just a little further, even after much learning and practice.

The ALs were designed to reflect this reality of learning. They help educators, students, and parents know how ready students are to access the curriculum at the next level.



# HOW DOES THE PSLE SCORING SYSTEM WORK?

- The overall PSLE Score is made up of 4 subject Achievement Levels (ALs).
- The PSLE Score can range from 4 to 32, with 4 being the best.



**Elena** PSLE Score **14**

PSLE Subject	AL Score
English	2
Math	2
Foundation Science	AL A = 6
Mother Tongue Language	4



# GRADING OF FOUNDATION SUBJECT GRADES

- Foundation subject grades are graded in scoring bands from **AL A to C**.
- To derive a student's overall PSLE Score for S1 Posting, AL A to AL C for Foundation level subjects are **mapped to AL 6 to AL 8 of Standard level subjects respectively**.
- This mapping is based on the learning and assessment load of the subjects, and informs students of how ready they are for the curriculum in secondary school.

FOUNDATION LEVEL AL	FOUNDATION RAW MARK RANGE	EQUIVALENT STANDARD LEVEL AL
A	75 – 100	6
B	30 – 74	7
C	< 30	8



# ENTERING SCHOOLS THROUGH DSA-SEC

- There is no change to the application and selection process with the shift to Full SBB.
- If your child has specific talents and strengths beyond the PSLE (e.g. areas such as sports, performing arts and leadership), consider the **Direct School Admission-Secondary (DSA-Sec)** as an alternative admission pathway to access secondary schools that have talent development programmes in these areas.



**Before  
MAY 2026**

Explore schools and  
their talent areas, and  
shortlist suitable  
schools

**MAY 2026**

Apply for DSA

**JUN to SEP  
2026**

Attend selection  
trials, interviews  
and auditions

**By SEP 2026**

Receive DSA  
offers if  
successful



To find out more information on DSA programmes in secondary schools, scan the QR code below.



Alternatively, you may visit <https://www.moe.gov.sg/schoolfinder>

# TIPS FOR PARENTS!

Be open and flexible when discussing your child's preferences, needs and choices.

Manage your own expectations and do not project these expectations onto your child.



Have regular conversations with your child to understand more about his/her strengths, interests, abilities, talents and aspirations.

Affirm your child and offer support when he/she shares his/her plans with you.

# BPPS Communication Policy (Parents)

The school believes in fostering close partnership with parents to guide our students in their holistic development. We trust that parents will support the school in looking into the well-being of BPPS staff. The school has put in place the following communication guidelines.

Bukit Panjang Primary's official modes of communication with parents comprising the following:

School phone	6769 1912
School email	bpps@moe.edu.sg
School mailing address	109 Cashew Road Singapore 679676
School website School Facebook	<a href="https://www.bukitpanjangpri.moe.edu.sg">https://www.bukitpanjangpri.moe.edu.sg</a> <a href="https://www.facebook.com/profile.php?id=100063784636440">https://www.facebook.com/profile.php?id=100063784636440</a>
Staff official school email address	<a href="#">refer to school website</a> <a href="https://www.bukitpanjangpri.moe.edu.sg/about-us/our-staff">https://www.bukitpanjangpri.moe.edu.sg/about-us/our-staff</a>
Parents Gateway	<a href="https://pg.moe.edu.sg/">https://pg.moe.edu.sg/</a>
School Publications	Student's Diary In Touch E-newsletter (Every Term) Endeavour Yearbook (Yearly)

# BPPS Communication Policy (Parents)



- Communication and engagement with teachers to be kept within the school hours (7.30 am to 5.00 pm) on working weekdays and during school term.
- Teachers are not expected to respond to parents' and/or students' queries after school operating hours, during weekends and on school and public holidays.
- For urgent matters, parents may contact the General Office if teachers are uncontactable during school hours.
- Teachers are not expected to provide their personal mobile numbers to parents and/or students.





# BPPS Communication Policy (Parents)



- Appointments for face-to-face meetings with staff should be made **at least 3 days in advance** (either through email with staff or leave a message with the admin staff at the General Office) to avoid disappointments and to minimize disruption to the staff's working schedule.
- Parents will receive a response to their email queries within 3 working days for general query, 7 working days for queries which require some investigation and 21 working days for queries with complexities, to ensure queries are duly addressed.
- The school reserves the right not to engage with any parent who is disrespectful, rude and abusive to our staff.
- All Civil Servants are protected by Protection from Harassment Act (PoHA).



# Parent-Child- Teacher Conference (PCTC)

30 May 2025 (Fri)



# Meeting with Class Mentors . . .

- General Sharing by the class mentors
  - Expectations
  - Rules of the class
  - Support they can provide to the students
  - Individual questions will be addressed separately via email.



teresa\_kelly\_len@schools.gov.sg

